

ITEM NO.	PART NUMBER	DESCRIPTION	QTY.
1	2102-1	HOUSING RIGHT SIDE	1
2	2103-1	HOUSING LEFT SIDE	1
3	2125	SCREW 6-32X1 1/2 ROUND HEAD	7
4	2030	#6wash 260X156X27	9
5	2128	NUT 6-32 ACORN HOUSING	9
6	2021	10-24X3/8 BARREL NUT	4
7	2019	10X24X1 1/2 THREADED ROD	1
8	2114	10X24X5 THREADED ROD	1
9	2120	SPACER, NYLON,312X1,000	1
10	2121	HOUSING SCREW O-RING	8
11	2141	SCREW 6-32X5/8 ROUND HEAD	2
12	2123	HOUSING SIDE PLUG	2
13	483	BOW SHAKEL	2
14	426	QUICK TIEWRAP	3
15	5539	WIRE NUT LARGE	3
16	2119	TERMINAL 1/4 16-14 GA FRT ANGLE	4
17	2213	DECAL SWITCH SIDE XSTREAM	1
18	2211	DECAL 115V AIRMAX XSTREAM	1
19	819	MOTOR UNIVERSAL SINGLE STAGE 120 V	2
20	2053	819 MOTOR MOUNTING EXTRUSION	2
21	2108	HOUSING O-RING FOR HOSE ADAPTER	1
22	881-a	ASSY CORDSET W/IE 120V 14 FT	1
23	2038	CORD RELIEF 365-ID BLACK	1
24	2104	GROMMET, 2000 & AIRMAX HOUSING	2
25	2100	INTERNAL MOTOR FILTER	1
26	2109	FRT FILTER ACCESS DOOR LEFT	1
27	2140	THUMBSCREW DISCHARGE FILTER DOORS	1
28	2143	6-32 NYLON INSERT LOCK NUT SMALL PATTERN	1
29	2059	HOUSING END CAP	1
30	5538	VELCRO, NYLON 8 BLACK VELSTICK	1
31	2027	FILTER INTAKE	1
32	2009	FOAM DISC, SOUND CONTROL	1
33	2126	819 BRUSH GASKET	2
34	2138B	INNER FRAME, DISCHARGE FILTER	1
35	2139-1	DISCHARGE FILTER	1
36	2110A	FRONT ACCESS DOOR, NUT SIDE WITH PRIMARY DISCHARGE FILTER FRAME	1
37	2148	SWITCH ROCKER 20A, 125V, 2 POS	2

DOUBLE™ **CHALLENGAIR**™
INDUSTRIES

XSTREAM™

INSTRUCTION MANUAL

**PLEASE READ ALL INSTRUCTION AND SAFETY PRECAUTIONS BEFORE OPERATING PRODUCT!!
SAVE FOR FUTURE REFERENCE, WARRANTY PERTINENT CONTENT.**

Product Specifications:

Model - XSTREAM
Voltage - 115
Amperage - 17.40
Wattage -2001
Hz - 60

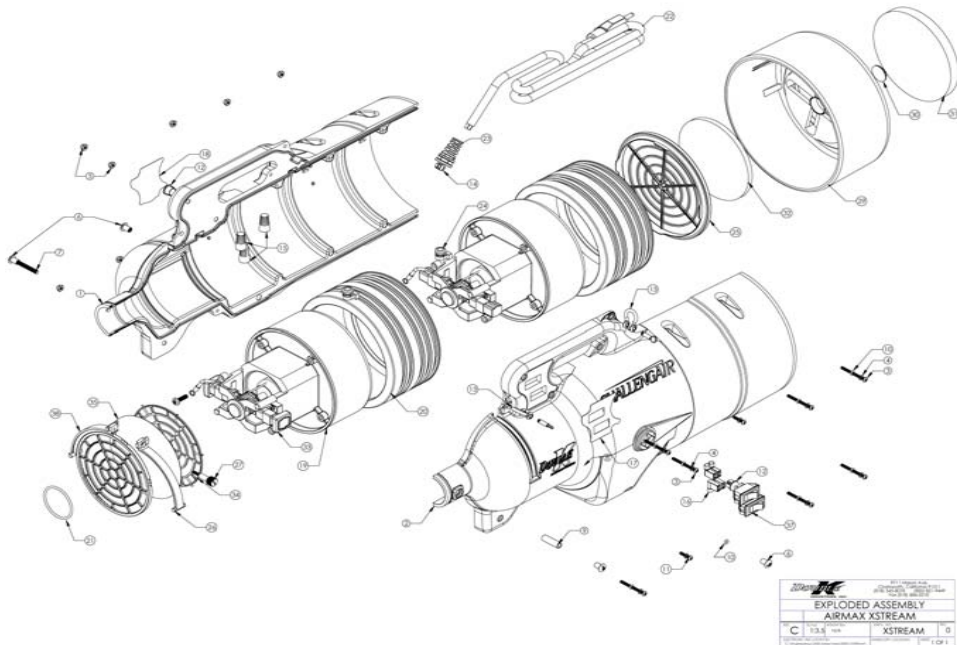
IMPORTANT SAFEGUARDS

WARNING: IMPORTANT SAFETY PRECAUTIONS!! PLEASE READ COMPLETELY BEFORE USING PRODUCT!!

When using electrical appliances, especially when children or animals are present, basic safety precautions should always be followed to reduce the risk of fire, electric shock, and personal injury, including, but not limited to the following:

DO NOT TURN ON DRYER WITHOUT FIRST HOLDING THE DRYER HOSE, as the air volume from the dryer can cause the hose to move rapidly and may cause injury.

1. Do not leave dryer **OR** the animal unattended while product is in use.
2. Unplug unit when not in use.
3. Do not use extension cords with dryer.
4. Do not unplug unit by pulling on cord.
5. Do not expose dryer to rain or water.
6. Do not use or store dryer where it can fall or be pulled into tub or sink or standing water. If dryer falls into water. . .UNPLUG IT. . .Do not reach into the water!
7. Unplug unit before attempting any maintenance or service.
8. Do not put any object into dryer openings.
9. Keep loose clothing, jewelry and hair away from dryer openings.
10. Do not direct dryer air towards eyes or ears of people or pets.
11. Never use dryer if it has a damaged cord or plug, has been dropped, damaged, exposed to rain or water. Return to **Double K Industries** or an Authorized Service Center for service.
12. This dryer, and all dryers of this type, produce very warm air, and should not be used as cage dryers. For cage drying, please consider our **CHALLENGAIR 560** Cage Dryer.



EXPLODED ASSEMBLY
AIRMAX XSTREAM
C 123 100 XSTREAM 104

DOUBLE™
INDUSTRIES

9711 Mason Avenue Chatsworth, CA 91311
(818) 772-2887 (800) 821-9449
Fax: (818) 886-0218
www.doublekindustries.com
info@doublekindustries.com

13. This product is for use on animals only.
14. Recommended operation by adults only. Use caution when working around children.
15. Do not use attachments not recommended by **Double K Industries**.
16. Do not operate without filters in place. Keep filters clean, as dirty filters limit air intake and may damage the motor or cause overheating.
17. Plug only into a properly grounded receptacle. Always make sure the amperage of the electrical outlet is sufficient for the amperage rating of the product. (See Product Specifications for amperage rating of this product).
18. Do not use product for anything other than its intended purpose.
19. Do not attempt to perform any service or maintenance not outlined in instruction manual.
20. Do not attempt any product modifications or alterations. Do not use if any part or switch is damaged - send to an Authorized Service Center or **Double K Industries** for service.
21. When servicing, use only **Double K Industries** parts.

Congratulations!

You've just purchased the **Double K CHALLENGAIR XSTREAM** Forced Air Dryer, which produces warm, high velocity air under pressure to make your grooming tasks easier. Your new dryer is designed to provide long, reliable service.

Please read this manual carefully and completely before beginning operation of your dryer and keep this manual in a convenient and safe place for future reference.

A warranty card is included with your dryer and should be filled out completely and mailed to Double K Industries within 30 days of the purchase date of your dryer to validate your warranty.

Your **CHALLENGAIR XSTREAM** has a two year warranty covering the unit against defects in materials and workmanship except brushes and filters (see warranty card for complete warranty information). It is also important to retain your sales receipt as proof of purchase should service ever be needed.

Your **CHALLENGAIR XSTREAM** has two brush-type motors. It is important that the brushes be changed when they become worn down to prevent damage to your dryer motor (brushes are maintenance components and are not covered under the warranty). We suggest checking the motor brushes after every 500 hours of dryer use. Please see section on BRUSHES in this manual for instructions.

A NOTE ABOUT HEAT: Your **CHALLENGAIR XSTREAM** has no heating element. The **CHALLENGAIR XSTREAM** produces heat by a "flow-thru" motor system, meaning the air is pushed through the motors and is warmed by the natural heat of the motors that occurs during operation. This means greater electrical savings and efficiency for you, and also that the dryer will reach maximum air temperature after about 2-4 minutes of operation. Obviously the greater the room temperature, the warmer the air from the dryer.

ASSEMBLY

To attach hose to dryer: Your dryer hose has a black hose adapter that will screw onto the hose in a counter-clockwise motion. The adapter with hose attached then fits onto the dryer with a half-twist motion that locks the adapter onto the dryer. First place the adapter over the snout of the dryer with the Double K logo facing up then turn hose counter-clockwise until the adapter locks in place, the Double K logos should then be sitting horizontally.

To remove hose from adapter: Turn the hose clockwise.

ATTACHMENTS: Your dryer is equipped with one hose and 3 twist-on nozzles. To attach nozzles to hose, twist the nozzles "counter-clockwise". Twist clockwise to remove.

OPERATION - Switches and Controls:

1. **Standard Speed/Standard Heat** - Turn on the foremost motor switch.
2. **High Speed/High Heat** - Turn on both motor switches.

REQUIRED MAINTENANCE (The below must be done on a regular basis or as needed in order warrant the warranty)

FILTER CLEANING: Both the external and internal filters of the **CHALLENGAIR XSTREAM** should be kept clean. If the filters become heavily coated with hair and/or dirt, it will reduce the air out-put of your dryer and can cause damage to the motors or cause the motors to overheat. Never operate the dryer without all filters in place.

Clean external filter daily by vacuuming or shaking off dirt and hair. Filter may be rinsed in water if necessary. Let filter dry completely before reinstalling on dryer.

To clean the internal *motor* filter of the **CHALLENGAIR XSTREAM:**

1. Unplug dryer.
2. Slide off the burgundy back cover of the dryer. This is a compression fit and will come off with a little effort.
3. Remove the filter disk on the motor assembly housing by pulling filter off.
4. Clean motor filter disk by vacuuming off hair and dirt, or wash filter gently in cool water. Shake off excess water and allow to air dry completely.
5. Replace filter disk onto motor assembly housing by pushing into place.
6. Replace dryer back cover.

To clean the *discharge* filter of the **CHALLENGAIR XSTREAM:**

1. Locate the two hinged doors towards the front of the dryer (part #2109). Then unscrew the small screw from the top of the doors. Swing the two doors outward, the discharge filter will be attached to one of the doors. The door and filter can be removed from the hinge for cleaning. If you wish, the filter may be washed gently with water (make sure filter is completely dry before reattaching to dryer), vacuumed or blown off. Please replace filter when necessary.

BRUSHES: Your **CHALLENGAIR XSTREAM** has two brush-type motors. The brushes should be checked for wear after approximately 500 hours of use. If the carbon brushes are worn shorter than 1/4 inch, the brushes should be replaced. Brushes may be ordered from **Double K Industries**, or an Authorized Service Center. Please be sure to specify that your dryer is an **XSTREAM**, as the brushes are slightly different from one dryer model to another.

To check and/or replace brushes:

1. Unplug electrical cord from wall outlet.
2. Slide off the burgundy back cover from the dryer. This is a compression fit and will come off with a little effort.
3. Remove the ten screws on the outside of the dryer that hold the two halves of dryer housing in place. It may be best to lay the dryer on its side while releasing these screws.
4. Each motor will be sitting in place and surrounded in the electrometric motor mounts.
5. Disconnect the motor power wires.
6. NOTE: See figures 1 & 2 (on back page) for an illustration of the brush components.

Front motor:

- A. Loosen the two brush retainer screws to loosen the brush retainer, then remove the brush, replacing it with a new one. Note: IMPORTANT - the brush has a small tab on the bottom that MUST be fitted into the slot on the motor frame for proper positioning.
- B. After the new brush is seated, tighten the brush retainer screws.
- C. Repeat steps A-B for brush on other side of motor.

Rear motor:

- A. Follow steps A-C above, as outlined for the front motor.
7. Set the motors back into their original positions in their allotted slots of the dryer housing, making sure that the motor gasket is in good condition and properly installed, then reconnect the motor power wires.
8. Reattach the screws and nuts around the outside of the dryer making sure the seals are matching up.
9. After the two halves of the dryer housing have been put together push the burgundy rear cover back onto the rear of the dryer.

Any maintenance not explained in this manual should be performed by **Double K Industries**, or an Authorized Service Center. Call **Double K Industries** for the name of the Authorized Service Center nearest you. All warranty service must be performed by an Authorized Service Center (or Double K Industries) to protect your warranty status.